



Wells Tennis Club Kit Item List Brochure

Intro

Thank you for consulting this document before completing your order using the following form: [insert URL](#)

We were delighted to debut the samples of these items at the Tennis Club Fashion Show Fundraiser 2023. For those who could not make it, where possible we have provided some images for your reference – kindly modelled by members of our club.

As these are test samples, the photos below are not exhaustive and mainly demonstrative of the personalisation & logos. Original manufacturer images are also included for your reference. PLEASE NOTE: Where stock/size availability is limited, we reserve the right to exchange between similar brands to fulfil orders of plain coloured items e.g Gildan, Fruit of Loom, Russell

We hope to expand and extend this booklet with time, as more items are received.

Wells Tennis Club

Emblem & Colours

We look forward to representing our club in its 126th year wearing the classic and regal colours: Navy, White & Gold! Our new emblem draws inspiration from our traditional identity here in Wells – which will make us instantly-recognisable & distinct from other clubs in the county.

The elegant swans of the Bishop's Palace moat embrace in the saltire-cross of St Andrew – who our world-famous cathedral is dedicated to. Gold court lines beneath represent our newly installed clay-style courts & the tennis ball glitters above, the sphere around which our community revolves.



Contents

Hoodie Adult and Kids....p.3

Half Zip Sweat Top.....p.4

T Shirt (Adults, Kids, Ladies).....p.5,6

Polo Shirts.....p.7

Shorts.....p.8

Adult Skort (Ladies).....p.9

Hoodie

Hoodie ADULT - 575M

Colours: Navy (FNA) or White (WHI)

Personalisation: Embroidery &/or Printed Lettering

Unisex Sizing: XS-XXL (Model wears 'M')

£35

Hoodie KIDS - 575B

Colours: Navy or White

Personalisation: Embroidery &/or Printed Lettering

Unisex Sizing: XS-XL

Personalisation: Embroidered Logo + Printed "Wells Tennis Club on rear:

£25



Adult Hoodie size conversions

Size	XS	S	M	L	XL	XXL
Chest (to fit)	34/36	36/38	38/40	40/42	42/44	44/46

Kids Hoodie size conversions

Size	3=XS	5=S	7=M	9=L	12=XL
Size	XS	S	M	L	XL
Age	3-4	5-6	7-8	9-11	12-13
Chest (to fit)	24/26	26/28	30/32	32/34	34/36

Half Zip Sweat Top



Product Details

AWDis Half Zip Sweat Top - JC031 & JC036

Colours: Navy or White

Material: 87%/13% Polyester (UPF 30+ UV protection.)

Personalisation: Embroidery &/or Printed Logo, Lettering

Male and Female fit options, slim fit mid-layer style: S-XXL

£25

Men's Half Zip Sweat Top

Size	S	M	L	XL	XXL
Chest (to fit)	37/39	39/41	41/43	43/45	45/48

Ladies Half Zip Sweat Top

Size	XS	S	M	L	XL
Ladies size	8	10	12	14	16

T Shirt



Product Details

AWD JusCool T Shirt ADULT - JC003

Colours: Navy & White only

Material: 100% Polyester (UPF 30+ UV protection.)

Personalisation: Embroidery &/or Printed Logo, Lettering

Unisex Sizing: XS-XXL (Models wear 'M')

- Unisex, so broad shoulder design
- Female fit plain tops available later in brochure

£16

AWD JusCool T Shirt KIDS - JC003B

Colours: Navy & White only

Material: 100% Polyester (UPF 30+ UV protection.)

Personalisation: Embroidery &/or Printed Logo, Lettering

Unisex Sizing: Age table below

£14

Adult T shirt

Size	S	M	L	XL	XXL
Chest (to fit)	37/39	39/41	41/43	43/45	45/48

Kids T shirt

Size	XS	S	M	L	XL
Age	3-4	5-6	7-8	9-11	12-13
Chest (to fit)	26	28	30	32	34

Ladies Cool Smooth T-shirt



Product Details

AWD Ladies Cool Smooth T-shirt ADULT - JC025

Colours: Navy or White only

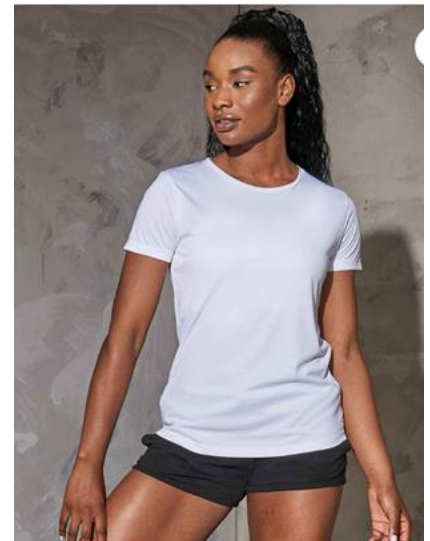
Material: 100% Polyester (UPF 30+ UV protection.)

Personalisation: Embroidery &/or Printed Logo, Lettering

Unisex Sizing: XS-XXL (Models wear 'M')

- Relaxed female fit plain tops
- Narrower shoulders than unisex

£17



Ladies T shirt

Size	XS	S	M	L	XL
Ladies size	8	10	12	14	16

Ladies Cool Plain Polo Shirt



Product Details

AWDis Cool PLAIN Polo Shirt - JC040 & JC045 (kids JC040B)

Colours: Navy or White (block colour)

Material: 100% Polyester (UPF 30+ UV protection.)

Personalisation: Embroidery &/or Printed Logo, Lettering

Male and Female fit options, loose but not baggy fit: S-XXL

£25

Men

Size	S	M	L	XL	XXL	3XL	4XL	5XL
Size	S	M	L	XL	XXL	3XL	4XL	5XL
Chest (to fit)	37/39	39/41	41/43	43/45	45/48	48/50	51/53	54/56

Ladies

Size	XS	S	M	L	XL	XXL
Size	XS	S	M	L	XL	XXL
Ladies size	8	10	12	14	16	18

Kids

Size	3-4	5-6	7-8	9-11	12-13
Size	XS	S	M	L	XL
Age	3-4	5-6	7-8	9-11	12-13
Chest (to fit)	26	28	30	32	34

Unisex Cool CONTRAST Polo Shirt



Product Details

AWDis Cool CONTRAST Polo Shirt - JC043

Colours: Navy and White (contrast colour)

Material: 100% Polyester (UPF 40+ UV protection.)

Personalisation: Embroidery &/or Printed Logo, Lettering

Unisex: S-XXL

£26

Unisex

Size	S	M	L	XL	XXL
Size	S	M	L	XL	XXL
Chest (to fit)	39/39	39/41	41/43	43/45	45/48

Shorts



Product Details

AWDis Cool Mesh Lined Shorts ADULT - JC080

Colours: Navy or White

Material: 100% Polyester (UPF 30+ UV protection.)

Personalisation: Embroidery &/or Printed Logo, Lettering

Unisex Sizing but MALE baggy-style fit: S-XXL

£25

Adult shorts

Size	S	M	L	XL	XXL
Size	S	M	L	XL	XXL
Waist (to fit)	30	32	34	36	38

Product Details

AWDis Cool Mesh Lined Shorts KIDS - JC080B

Colours: Navy or White

Material: 100% Polyester (UPF 30+ UV protection.)

Personalisation: Embroidery &/or Printed Logo, Lettering

Unisex Sizing but MALE baggy-style fit: S-XXL

£16

Kids shorts

Size	3-4	5-6	7-8	9-11	12-13
Size	3-4	5-6	7-8	9-11	12-13
Waist (to fit)	17	18	20	22	23

Adult Skort (Ladies)



Product Details

BANNER Adult Skort (Ladies) - AAAA112314

Colours: Navy only

Material: Stretch synthetic fabric

Personalisation: Embroidery &/or Printed Logo, Lettering

- Featuring stretch fabric to allow wide range movement when training
- Elasticated waistband and dipped hem with comfortable and discreet inner short
- Internal APTUS branded draw cord
- Silver reflective transfer details

IMPORTANT NOTE: These skorts are intended to be a longer length than the original samples. They come from a different supplier than the other items so there may be a small discrepancy in colour match with items of a different brand. These may also take longer to process, as we would like to order a few at a time to consolidate postage costs. Thanks for your cooperation!

£31